

About the Seminar:

Recent trends in mathematics have seen a shift towards interdisciplinary and applied mathematics, with a focus on solving real-world problems and addressing global challenges. This has led to the development of new mathematical methods and techniques, such as machine learning, optimization, data analysis and network science. These mathematical tools are being applied across a wide range of fields, including medicine, finance, energy, climate, and social sciences.

The objective of the Seminar is to bring together mathematicians to work collaboratively with professionals from other fields to tackle complex and pressing issues facing society.

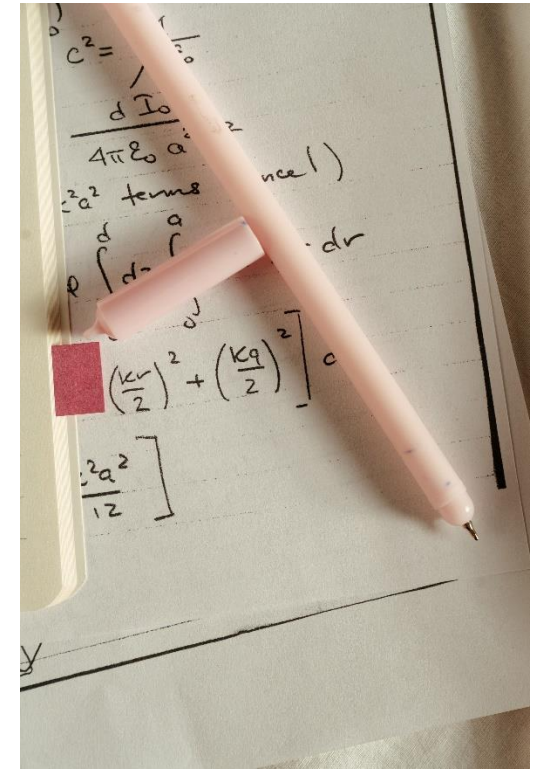
Organized by:

Department of Mathematics

In collaboration with

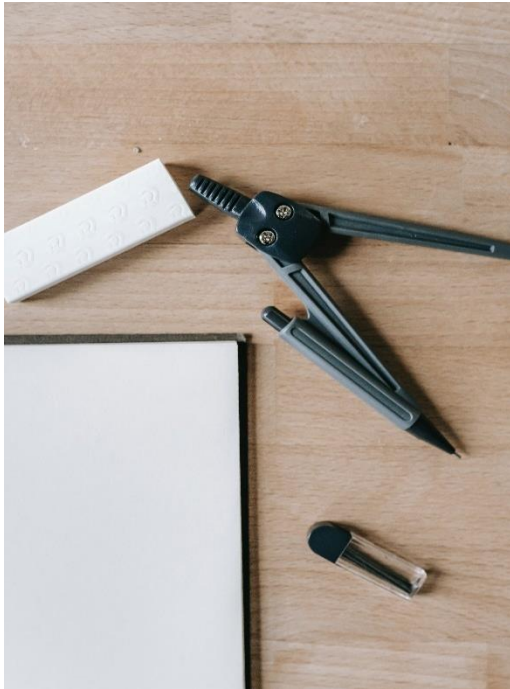
Internal Quality Assurance Cell

**Sarojini Naidu
College for Women**

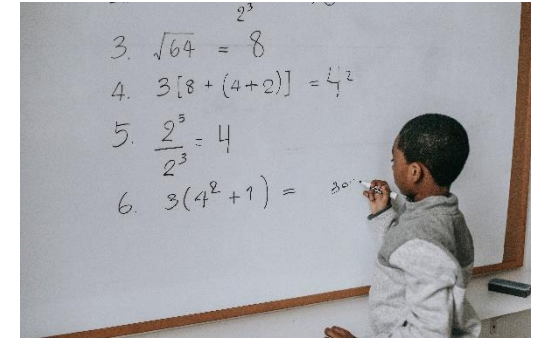


**NATIONAL
SEMINAR ON
RECENT TRENDS IN
MATHEMATICS
AND ITS
APPLICATION**

11th January 2019



"Pure mathematics is, in its way, the poetry of logical ideas." – Albert Einstein



About the College:

Founded on the 14th of August 1956 as a college dedicated to the rehabilitation of refugees, Sarojini Naidu College for Women is one of the premier institutions for women's education in the northern suburbs of Calcutta. Initially affiliated to Calcutta University, it now enjoys affiliation under the West Bengal State University and offers quality education in Arts, Commerce, Science and Management streams.

SNCW is dedicated to the advancement of knowledge, learning and understanding in the service of society. The college has a dedicated and sincere faculty for whom the general well-being of the students is of utmost importance.

Sarojini Naidu College for Women is committed to ensuring students from all backgrounds achieve their full potential in various spheres of activity and to this effect, ever since its establishment, students of SNCW have demonstrated academic talent and commitment irrespective of their social, religious, or economic background.

Resource Persons:

Prof. Basab Chaudhuri, VC, WBSU

Dr. Partha Karmakar, Assistant Secretary, Calcutta Mathematical Society

Prof. Dilip Kr. Ganguly, Dept. of Mathematics, Calcutta University

Prof. Tanmoy Shom, IIT (BHU)

Dr. P.S. Mukhopadhyay, RKM Residential College, Narendrapur

Prof. R. Thangadurai, Harish Ch. Research Institute, Allahabad

