



Organized by:

Department of Zoology

In collaboration with

Internal Quality Assurance Cell

Sarojini Naidu College for Women



About the Seminar:

Polycystic ovary syndrome, or **PCOS**, is the most common endocrine disorder in women of reproductive age. The syndrome is named after the characteristic cysts which may form on the ovaries, though it is important to note that this is a symptom and not the underlying cause of the disorder.

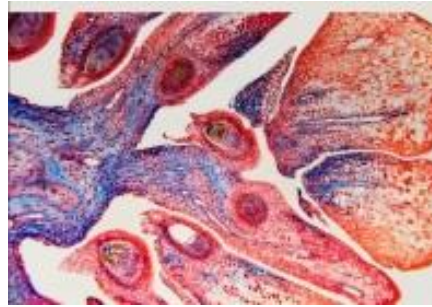
Women with PCOS may experience irregular menstrual periods, heavy periods, excess hair, acne, pelvic pain, difficulty getting pregnant, and patches of thick, darker, velvety skin. The primary characteristics of this syndrome include: hyperandrogenism, anovulation, insulin resistance, and neuroendocrine disruption.

The seminar would look into the lifestyle measure that today's women may adopt to minimize the risk of getting PCOS.



SEMINAR ON POLYCYSTIC OVARY SYNDROME

13th September 2017

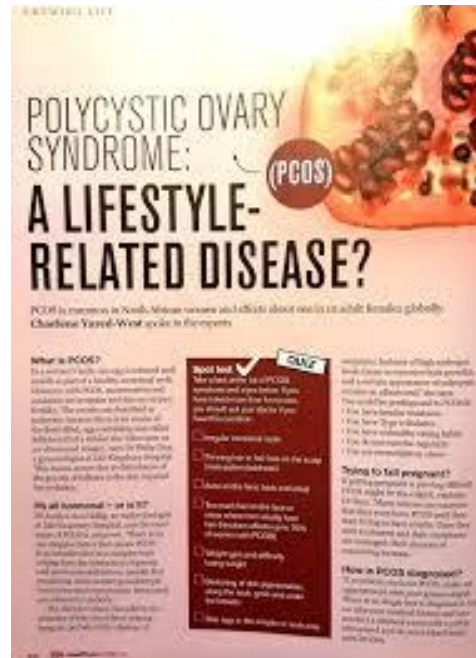


"...half the battle is knowing that you have it."

Resource Person

Dr. Barnali Ghosh

Gynecologist and
Obsterician, Kolkata



About the College:

Founded on the 14th of August 1956 as a college dedicated to the rehabilitation of refugees, Sarojini Naidu College for Women is one of the premier institutions for women's education in the northern suburbs of Calcutta. Initially affiliated to Calcutta University, it now enjoys affiliation under the West Bengal State University and offers quality education in Arts, Commerce, Science and Management streams.

SNCW is dedicated to the advancement of knowledge, learning and understanding in the service of society. The college has a dedicated and sincere faculty for whom the general well-being of the students is of utmost importance.

Sarojini Naidu College for Women is committed to ensuring students from all backgrounds achieve their full potential in various spheres of activity and to this effect, ever since its establishment, students of SNCW have demonstrated academic talent and commitment irrespective of their social, religious, or economic background.